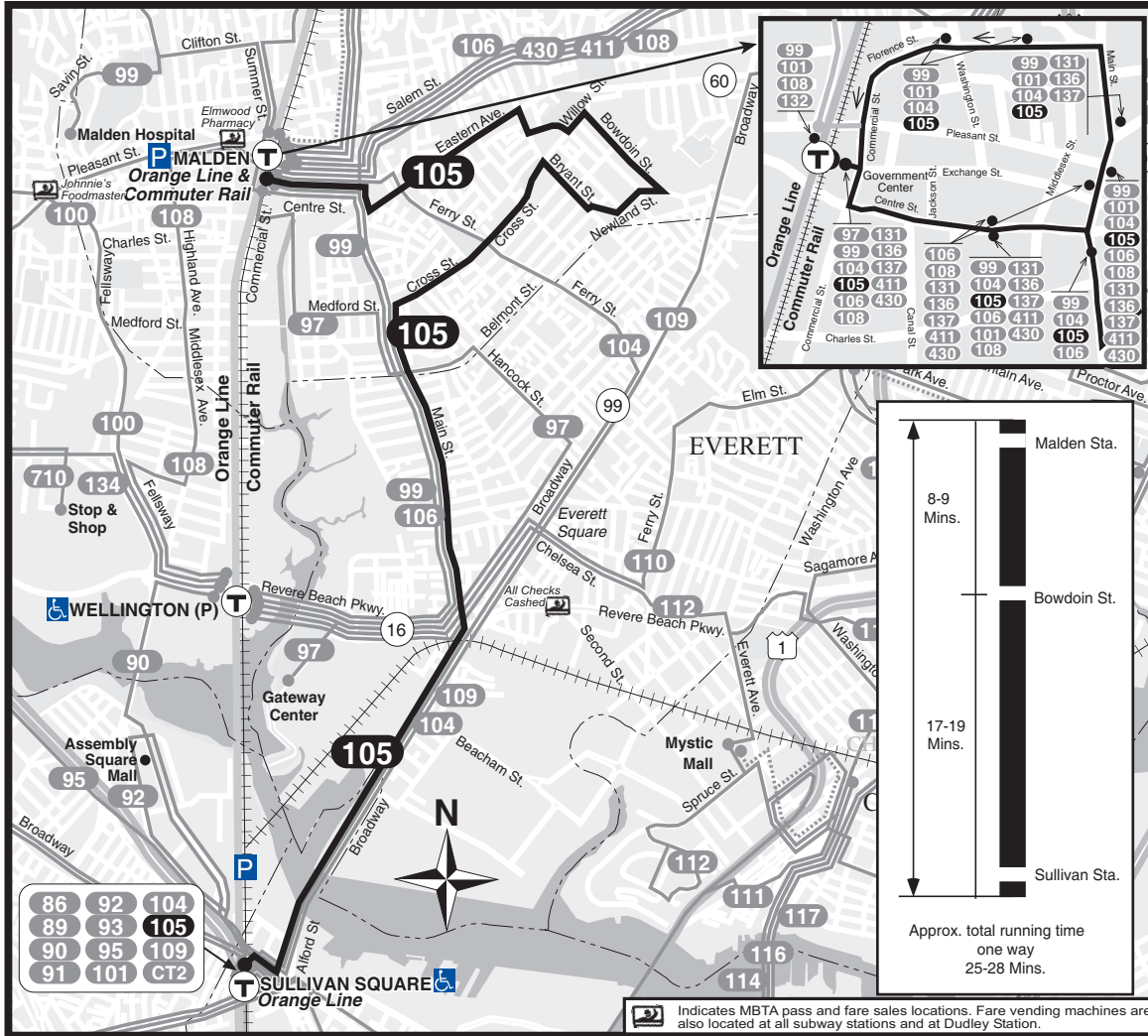


T Route 105

Malden Center Station - Sullivan Square Sta. via Newland St. Housing & Main Street



Weekends only

105

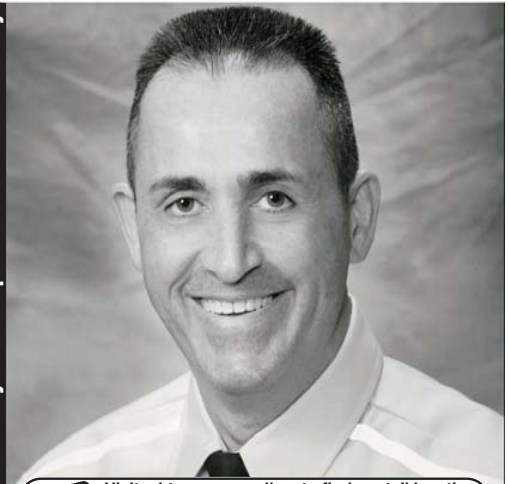
WINTER December 27, 2008 - March 20, 2009

Malden Center Station - Sullivan Square Station via Newland St. Housing

Serving: Malden Square, Sweetser Circle, Main St., Broadway and connections to the Orange Line & Haverhill/Reading Commuter Rail



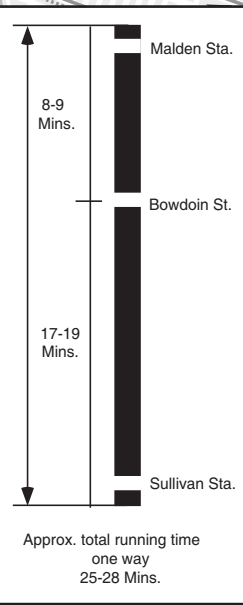
Massachusetts Bay Transportation Authority



Visit mbta.com or call us to find a retail location where you can obtain CharlieCards and purchase MBTA passes and stored value.

Customer Service/Travel Info 617-222-3200
 Toll Free.....1-800-392-6100
 Hearing Impaired (TTY).....617-222-5146
 Web Site.....www.mbta.com
 Schedules subject to change, please exit rear door.
 Arrive times are approximate, subject to traffic.
 NO SMOKING on MBTA property.

Driven by Customer Service



Indicates MBTA pass and fare sales locations. Fare vending machines are also located at all subway stations and at Dudley Station.