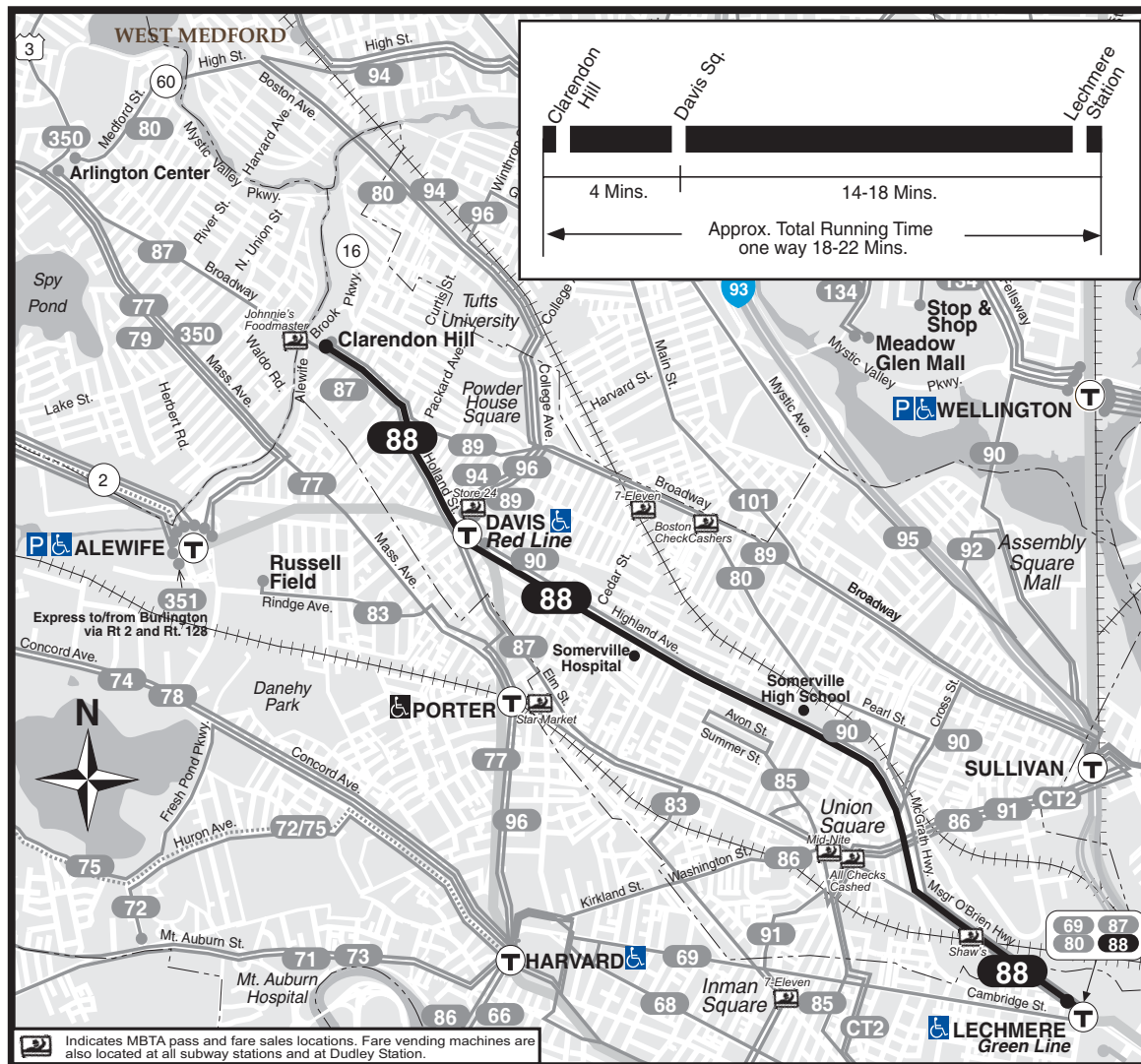


**T** **Route 88** Clarendon Hill - Lechmere Station via Highland Avenue



schedule change



**88**

WINTER December 27, 2008 - March 20, 2009

**Clarendon Hill -  
Lechmere Station**  
via Highland Avenue

Serving: Teele Sq., Davis Station, Somerville Hospital  
and connections to the Red & Green Lines



Massachusetts Bay Transportation Authority



Visit [mbta.com](http://mbta.com) or call us to find a retail location where you can obtain CharlieCards and purchase MBTA passes and stored value.

Customer Service/Travel Info 617-222-3200  
Toll Free.....1-800-392-6100  
Hearing Impaired (TTY).....617-222-5146  
Web Site.....www.mbta.com  
Schedules subject to change, please exit rear door.  
Arrive times are approximate, subject to traffic.  
NO SMOKING on MBTA property.

**Driven by Customer Service**